

TULSA POST NEWSLETTER



December 2019

Tulsa Post President's Letter

By Anna Childers

Happy December Tulsa Post members and fans!

This is my final President's letter, as I will officially put down the gavel at the end of this month. The importance of local boards is paramount for the continued success of this organization. It has been my honor to serve and I am very proud of this Board and the accomplishments we have achieved this year!

As I have mentioned before, my job as the President of 2019 Tulsa Post was made easy by the early forethought of the previous Board and the enthusiasm and dedication of the current Board. In addition, I am thankful and proud of all the companies who have supported Tulsa Post this year by sponsoring programs and providing their employees to volunteer in multiple events throughout the year. This Post is as strong as the will of its members!

The incoming Board inherits an excellent Post to further advance and carry on the five key pillars of the Run to 2020 SAME Centennial Celebration. Here are some highlights of the past year's accomplishments:



- ◇ Meet-the-Corps Industry Day in February: Over 500 individual attendees, over 300 companies represented and 73 sponsors! A huge success! For 2020, the event is scheduled for River Spirt Casino Event Center, which is conveniently located along the Arkansas River banks in close proximity to USACE Tulsa District. In conjunction, the Tulsa Post's will kick-off our local SAME Centennial celebration with a timed Centennial Celebration 5-k race and 1-mile fun run!
- ◇ Cost Engineering Workshop in March: Clif Warren, Wade Anderson, Miro Kurka, and Ashley Allender organized this very successful event focusing on cost engineering for construction projects with Department of Defense agencies. The article written of this event can be found at The Military Engineer May-June issue <https://sameneews.org/tme-may-june-2019/>.
- ◇ Up with Trees Community Service Event in April: Volunteers planted over 25 small to mid-sized trees to provide green space in Tulsa.
- ◇ Post Leaders Workshop in August: Wade Anderson, Rebecca Alvarez and Miro Kurka participated. Some of the key themes included how to create value to our members through SAME and then putting that member value into action
- ◇ Resilience Workshop in October: The workshop focused on the historic spring floods of Tulsa and the surrounding communities, lessons learned and community collaboration. Panelists and presentations by USACE Tulsa District, the National Weather Center, Muskogee and Tulsa Counties. Check out the event video: <http://www.sametulsa.org/videos.html>.
- ◇ Increase in membership by 15 members in CY2019: We maintain our position as a strong "medium Post" with current total members of 389 (ceiling for a medium Post is at 451).
- ◇ Submitted a Fellows nomination: Loretta Turner, Small Business Liaison of Tulsa Post, was nominated for the Class of 2020 of the SAME Academy of Fellows. The results will be announced at the end of the year.
- ◇ Initiated SAME Student Chapter at the Oklahoma State University in November: We also added a Student Chapter Liaison position to the 2020 Board.

Again, warmest thanks to everyone who have supported the SAME Tulsa Post in 2019!

I look forward to 2020 and wish everybody a wonderful holiday season!

Kind regards,

IN THIS ISSUE

- ◇ SAME Centennial
- ◇ J.D. Metcalfe Scholarship
- ◇ Recap—SBC 2019

- ◇ Recap—Monthly Programs
- ◇ Tulsa Post Happenings
- ◇ Resiliency Corner
- ◇ Member Spotlight

- ◇ National Events
- ◇ 2020 STEM Camps
- ◇ Save the Date—MTC 2020!

SAME Centennial

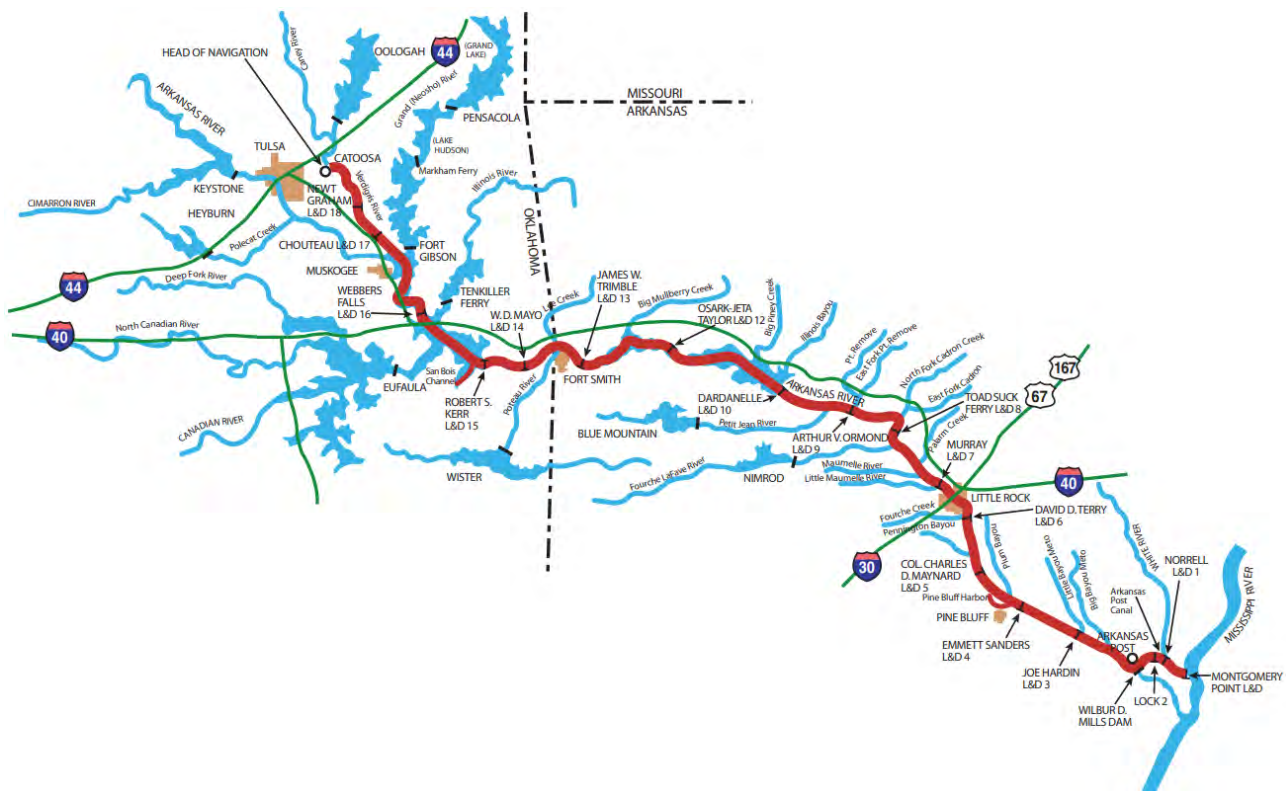
The Run to 2020 & Beyond



As SAME is celebrating our centennial this year with The Run to 2020 & Beyond, the McClellan-Kerr Arkansas River Navigation System (MKARNS) has a significant milestone approaching, marking its 50th Anniversary in 2021! The MKARNS officially opened on 05 JUN 1971 and at the time was the largest civil works project ever taken on by the U.S. Army Corps of Engineers (USACE). President Richard Nixon traveled to the Tulsa Port of Catoosa to dedicate the waterway, stating “it is a pleasure for me to be here on the Oklahoma seacoast.”

The MKARNS is a 445-mile of navigable waterways originating at the Tulsa Port of Catoosa and runs southeast through Oklahoma and Arkansas to the Mississippi River. There are 18 locks on the navigation system that serve as a stair case of water to navigate the difference in elevation, 420 feet, between the Mississippi River and Catoosa, OK.

Senators John L. McClellan and Robert S. Kerr worked to receive the federal funding that was needed to build this multipurpose waterway. They championed the project through years of development which prompted Congress to officially name the system after them.

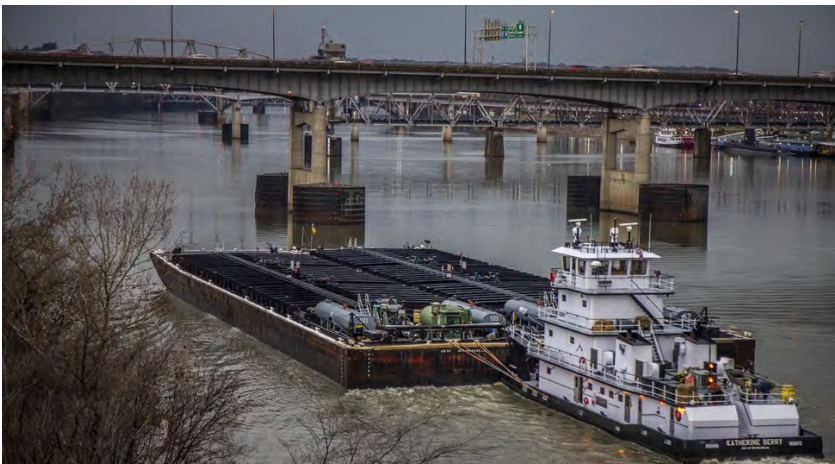


Continued on next page...

SAME Centennial cont.

In the past two years the MKARNS shipped more than 12 million tons of cargo valued at \$4 billion. That is a shipping increase of nearly 8 percent from previous years. This increase was recognized by the USACE with a designation change from a moderate to high-use waterway system. A high-use designation from the USACE will provide additional federal funding for the MKARNS each year.

Commercial activity on the MKARNS waterway includes up bound barges of bauxite, grain, chemicals, fertilizer, steel, pipe, asphalt, soda ash, petroleum products, clay, sand, gravel and miscellaneous commodities. Down bound barges ship soybeans, wheat, lumber, steel, coal, gypsum, scrap iron, rock, refined petroleum products and manufactured equipment. Barge transportation is significantly more efficient than rail or truck per ton of freight moved per mile. Benefits also include reduced noise, air pollution, and roadway congestion.



President Richard Nixon, Tulsa Port of Catoosa, 05 JUN 1971



EASTERN OKLAHOMA PROSPERITY

Eastern Oklahoma is reaping dividends from river navigation, The Tulsa Tribune reported on Jan. 11, 1973:

“Dam building, river navigation and the accompanying industrial and recreational development of Eastern Oklahoma seem to be having a healthy effect on personal income in this part of the state.

Fourteen Oklahoma counties had gains of more than 100 percent in median family income from 1959 to 1969, according to the U.S. Census Bureau. And 11 of the 14 counties are in Eastern Oklahoma. Generally, the counties showing the biggest percentage gains were those with the lowest median incomes in 1959...”

Should you have a recommended historical event that helps define our Post, please contact the Tulsa Post’s Centennial POC, Mr. Ashley Allinder: Ashley.J.Allinder@usace.army.mil .

2019 J.D. Metcalfe College Scholarship

Applications Now Available!

The Tulsa Post of the Society of American Military Engineers (SAME) is pleased to announce the application for award of three \$2,000 minimum scholarships to Junior or Senior students in Engineering, Biological Sciences and Physical Sciences programs.

Our annual scholarships are named in honor of Mr. J.D. Metcalfe who was instrumental in accomplishing unprecedented and nationally recognized flood risk reduction initiatives in Tulsa, Oklahoma and was a loyal and respected member of the SAME. During his career as Tulsa Street Commissioner, Mr. Metcalfe's vision and leadership improved the quality of life of countless Tulsans. These scholarships will recognize students whose accomplishments; associated with scholastic abilities, leadership and love of country; are honored by SAME and mirror the achievements of Mr. Metcalfe.

These scholarships are not limited to students interested in military careers. All applicants in Engineering, Biological Science, or Physical Science programs that meet the eligibility requirements will be considered.

Applications are due December 31, 2019, and are available on the Tulsa Post website:

<http://www.sametulsa.org/scholarship.html>

Applications must be postmarked by December 31, 2019, and mailed or emailed to:

Tulsa Post Society of American Military Engineers
c/o ALL Consulting (David Epperly)
1718 S. Cheyenne Avenue Tulsa, OK 74119

If you have any questions or need an application, please contact David Epperly:

Phone: 918-382- 7581 or by E-mail at depperly@all-llc.com.



Event Review - SBC 2019

The SAME Small Business Conference (SBC) was held in Dallas, TX, November 19-22, 2019. Over 3,500 attendees were present and were a good mix of government, military, and private consultants. It was a great networking opportunity for all as there were many opportunities to talk with government officials, primes could find small business partners, and small businesses could find primes to partner with. U.S. Army veteran, Matthew “Griff” Griffin, shared insights to his experiences in combat zones and how he built a business selling flip-flops made from materials in conflict zones. Additionally, there were multiple concurrent educational and opportunity briefings throughout each day to help attendees learn more about working with the government.



Article contribution from Rebecca Alvarez, Guy Engineering

Event Review - September Program

At our September luncheon, we examined cybersecurity requirements from two perspectives – that of U.S. Army Corps of Engineers design standards and AE Company efforts to protect their data and that of their clients. Richard Watson, an Electrical Engineer with Tulsa District and a system administrator on the Hydropower SCADA System along with SCADA systems at other civil works projects in Tulsa District discussed government cybersecurity requirements. Andy Knauf, Chief Information Officer for Mead & Hunt, and responsible for providing Leadership and Strategy for all technology operations as well as innovation and cybersecurity discussed Mead & Hunt's efforts to secure its network, and provided advice to other industry attendees on required cybersecurity measures.



Article contribution from Miro Kurka, Mead & Hunt

September Program Sponsor

**Mead
& Hunt**

**MORE THAN WHAT
YOU THOUGHT**

- ◆ Architecture
- ◆ Engineering
- ◆ Dams & Levees
- ◆ Historic Preservation
- ◆ Energy Services
- ◆ Aviation Pavement & Systems
- ◆ Environmental Services



meadhunt.com

Event Review - October Workshop

The Tulsa Post hosted a resiliency workshop on October 15, 2019. The subject was the 2019 Flood Event that occurred this spring from the Keystone Reservoir downstream and through Muskogee County and the surrounding areas. It was moderated by Mr. Bill Smiley, Tulsa District US Army Corps of Engineers (USACE), with presentations and panel discussions by county commissioners from Tulsa and Muskogee Counties and subject matter experts from the Tulsa District USACE, the Cherokee Nation, the City of Tulsa, the National Weather Service, Muskogee County Emergency Management, and the State of Oklahoma Emergency Management.

The session began with setting the stage for the 2019 flood event by USACE and the National Weather Service. Then county and local authorities briefed their respective emergency actions. Two moderated panel discussions were conducted with emphasis on lessons learned and recommendations to prepare for future emergencies.

The session included a working lunch, and the event was sponsored by sustaining SAME Member Firm A&M Engineering and Environmental Services. A&M provided a spotlight presentation of their firm and capabilities. Approximately 42 professionals attended this successful event.



Article contribution from Clif Warren, Olsson

October Workshop Sponsor



A & M - About Us



A & M Engineering and Environmental Services, Inc. (A & M) was founded by a professional engineer and professional geologist working in the Oklahoma area during 1984. A & M has since grown into a diverse company providing turnkey compliance, consulting, engineering, design, construction, and remediation services to the private sector, governmental agencies (USEPA and USACE), and many Native American tribes. Our professional staff includes environmental specialists (compliance experts, consultants, scientists); engineers (environmental, civil, geotechnical); inspectors (asbestos, mold, lead based paint); geologists; hydrogeologists; health and safety specialists; and biologists. Our construction and remediation capabilities are supported by project managers, equipment operators, field technicians, and our own fleet of heavy construction equipment. [Some of our primary services are listed below.](#)

Compliance & Consulting Services:

- Air Quality
- Storm Water (SWP3)
- Spill Prevention (SPCC)
- Wastewater
- Waste
- Health, Safety, Indoor Air Quality
- Due Diligence (Phase I & II)
- Brownfields Redevelopment
- EPCRA & TRI
- USACE Permitting
- Groundwater & Hydrology
- Compliance Evaluations & Audits
- NEPA Environmental Assessments
- Asbestos, LBP, Mold Services

Construction & Remediation Services:

- Landfills & Impoundments
- Superfund
- Retention/Detention Structures
- Drainage Improvements
- Flood Control & Levee Repairs
- Lagoon Sludge
- Facility Decommissioning
- Soil Remediation
- Water/Wastewater Treatment
- Vacuum Truck Services
- Construction Management
- Horizontal Development
- Grading Plans
- Bioremediation of Soils and Water

Engineering & Design Services:

- Environmental Engineering & Design
- Landfill Engineering and Leachate
- Surface Impoundments
- Geoenvironmental Engineering
- RCRA, CERCLA & CCR
- PFAS
- Waste Piles
- Environmental Management & Permitting
- Contaminated Site Assessment including Fate and Transport
- Remedial Action Plans and Design
- Civil Engineering & Design
- Geotechnical Engineering & Testing
- Storm Water Modeling & Design

A & M Engineering and Environmental Services, Inc.
 10010 East 16th Street | Tulsa, Oklahoma 74128
 Office Telephone: (918) 665-6575 | Fax: (918) 665-6576



**PROVIDING OUR CLIENTS THE DIVERSITY OF SERVICES THEY NEED.
 BUILDING THE TRUST THEY DESERVE.**

Event Review - November Program

After several months of planning and coordination, SAME Tulsa Post and Oklahoma City Post made the first official connections between a college campus and SAME in Oklahoma. Anna Childers, SAME Tulsa Post President, met with the Oklahoma State University Stillwater campus professors and staff in July and August to ascertain the interest in starting a student chapter and subsequently to implement the formation of the student chapter. On November 12th, OKC and Tulsa Post representatives traveled to Stillwater campus to hold a two-hour program that was geared toward STEM students. The program was held at OSU's Endeavor center with lunch provided by Jacobs Engineering.

The program was divided into two parts; the first part highlighted careers as civilians working with Army's engineering projects and the second part highlighted the connectivity of SAME to the careers working with our Nation's security and future challenges:

Military Engineers - Some, but not all, are Soldiers; What Engineers Do to Support our Military & National Security
By Wade Anderson, PE, Chief, Engineering & Construction Tulsa District

The presentation highlighted how both civilian and active or reserve unit engineers support our military and national security. The mission of the US Army Corps of Engineers is to provide vital public engineering services to strengthen the Nation's security and how engineers, mostly civilian, of all disciplines provide engineering and construction services to serve mission. The presentation also emphasized several recent projects to illustrate the type of programs and projects in which a civilian "Military Engineer" may be engaged.

KC-46A Program - Construction Management on a Large Scale

By Daniel de Robles, PE, US Army Corps of Engineers, Area Engineer, Central Oklahoma Area Office

The presentation highlighted the construction at Tinker Air Force Base under the supervision of the US Army Corps of Engineers, in particular work for the Air Force's new air refueling tanker. While working on a large program, the presentation provided examples on the importance of team work and appreciation of different engineering disciplines.

Industry - Government Collaboration

By Anna Childers, PhD, Jacobs Engineering, Project Manager, Buildings, Infrastructure, and Advanced Facilities

Private Architectural-Engineering companies and sustaining member SAME firms, like Jacobs, support many different types of Department of Defense projects. The presentation featured different project areas supporting the Nation's security from hangars, runways, taxiways, aprons, buildings and infrastructure, access control points and visitor centers, cyber security, global and local environmental solutions to local collaborative projects.

Discover the Society of American Military Engineers

By Joseph Schroedel, BG, P.E., F.SAME, USA (Ret.) SAME Executive Director

The presentation highlighted the functions and the mission of SAME. In addition, the presentation connected the U.S. National Academy of Engineering (NAE) Global Grand Challenges for Engineering (created in 2008) to the mission of SAME student outreach: an aspirational vision of what engineering needs to deliver to all people on the planet in the 21st century. The 14 Grand Challenges were presented and explained how the students can engage in solving the challenges through SAME by having brainstorming sessions on topics of interest within each category. You may learn more this at www.engineeringchallenges.org!

Article contribution from Anna Childers, Jacobs

Event Review - November Program

Society of
SAME
American Military Engineers
Oklahoma City Post
Tulsa Post

OSU COLLEGE OF
ENGINEERING, ARCHITECTURE
AND TECHNOLOGY
DIVERSITY & INCLUSION PROGRAMS

LUNCH, LEARN, & CONNECT



November Program Sponsor

JACOBS®

Creating Value

through permitting, planning,
design, construction and operations.

401 South Boston Ave., #330
Tulsa, OK 74103
Phone: 918.921.6050



www.jacobs.com

Event Review - Christmas Social

The Tulsa Post Christmas party was held at Tulsa Historical Society on December 18th, 2019! This year we changed things up a bit and included a mystery sleuthing event for attendees to solve! To top off the night, we raised close to \$1,600 from the silent auction for the Tulsa Post scholarship fund from baskets donated by sustaining member firms – thank you! We look forward to seeing everyone at our upcoming events in 2020!

Thanks to all who attended this year's event!



Continued on next page...

Event Review - Christmas Social



**Outstanding
Small Business:
Southwind Construction**



**Outstanding
Large Business:
Olsson**



**Outstanding Individual
Member Award:
Wade Anderson**



**Outstanding Young
Member Award:
Kyle Marlay**



Continued on next page...

Event Review - Christmas Social

SAME Service Award Pins Presented

Renada Anderson — 5 yrs

Robert Burton — 5 yrs

Anna Childers — 10 yrs

Daniel Keithline — 5 yrs

Miro Kurka — 15 yrs

Charles McComas — 10 yrs

Gene Snyman — 10 yrs



Robert Burton



Miro Kurka



Charles McComas



Renada Anderson



Gene Snyman



Anna Childers



Daniel Keithline

Tulsa Post Happenings

Small Business Deputy of the Year (FY19)

During the 2019 SBC conference, award highlights included recognizing Gene Snyman, Tulsa District, as a forward leaning leader in the Small Business Program. He identified multiple outdated and inaccurate facts in the USACE PROSPECT 183 Formal Source Selection course, and initiated a full rewrite of the course material to include updates and practical exercises. He developed and led a USACE Tiger Team and Subcontracting Pilot Program (SPP) to test subcontracting initiatives and address consistent deficiencies noted in DoD audits.

Industry-Government-Engagement Workshop on Cost Engineering Follow-up

As a follow-up to our Industry-Government-Engagement Workshop on Cost Engineering in March, Tulsa SAME supported the CEO Roundtable at the 2019 SAME Small Business Conference on 20 November. Several post members attended and participated in this roundtable which included senior leaders from the U.S. Army Corps of Engineers, the Naval Facilities Command, the Air Force Civil Engineer Center, the Office of the Secretary of Defense as well as over 20 CEOs of engineering and construction firms. Issues discussed at the roundtable included: DD1391 accuracy, unquantifiable risk, overburdensome specifications, cost schedule risk analysis, communication, partnering, and access to actual cost data. As a result of the roundtable, Tulsa SAME will be helping to update white paper on cost engineering. Additionally, SAME will establish a national-level focus group on this issue to work on those things that can be fixed.



Young Member & Fellows Event

On October 29th, the SAME Tulsa Post held a young member/fellows event at the Flying Tee. We enjoyed a night of camaraderie, great eats, and hitting golf balls. Everyone left full from all the food, and sore from hitting so many golf balls, it was a blast. Thanks to all whom attended, and the Flying Tee and staff for their help in making the event a success. Please join us at our next event all are always welcome.



Tulsa Post Happenings

Tulsa Post's Donation to Local Organizations

This year the Tulsa Post made the following donations to the following organizations:

- Tulsa Engineering Foundation*
- Homes for Our Troops*
- Boy and Girl Scout Program*
- Blue Star Mothers Program*
- New Heights Summer Camp*
- Up with Trees*

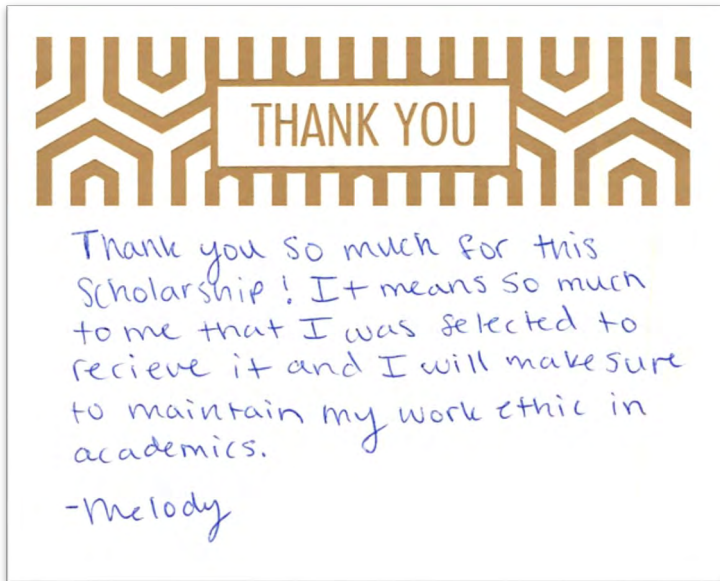
Thank You's to the Post!

From Renewable Scholarship Recipients:

Hello Mr. David Epperly,

My name is Kaitlyn Bell and recently I received a letter congratulating me on my award of the SAME scholarship and would just like to say thank you so much to those at SAME and that I hope to do you guys proud and succeed in all my academic adventures. Once again thank you so much!!

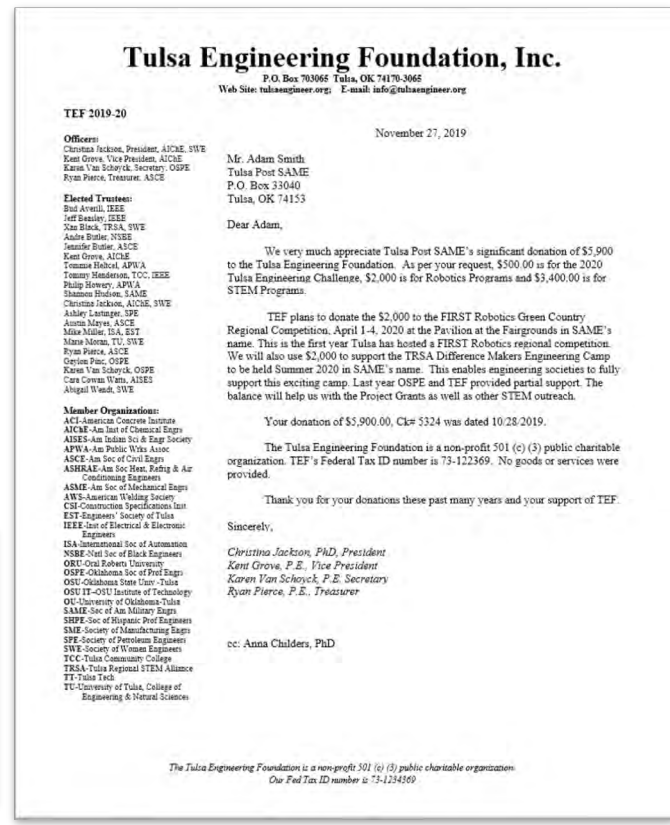
Have a great day and hope to talk again,
Kaitlyn Bell



Thank you, SAME Team, for the support and kind words! We rave about the hardworking, positive attitudes you bring to every volunteer project. No apology necessary -- always plenty of trees to plant! We look forward to our next project together.

Please express our thanks to your board and have a wonderful holiday season!
-Up with Trees

From TEF:



Resiliency Corner

WINTER-RELATED RESILIENCY

Winter storms and other extreme winter-related conditions are an inevitable part of doing business that can lead to catastrophic impacts. Over the last several decades, winter weather has cost billions of dollars per year in global economic losses. As with any weather event or crisis, preparedness and planning are key to protecting a company's employees, assets, and operations.

POTENTIAL HAZARDS AND IMPACTS

According to the National Weather Service, winter weather creates many potential hazards that can have huge impacts on society.

Extreme Cold. Prolonged exposure can lead to frostbite or hypothermia, becoming life threatening. Poorly insulated pipes can burst, damaging structures and leaving personnel without access to water.

Heavy Snow/Blizzard. Snow and blizzard events can immobilize an area leading to stranded personnel and supplies and disrupting emergency services. Heavy snow can collapse structures and trees potentially knocking down powerlines.

Winter/Ice Storm. Winter storms and ice can bring areas to a standstill. Add in strong winds and we get extremely low windchills, limited visibility, slippery surfaces leading to an increase in cold related illness and vehicle accidents. These hazards also bring the possibility for property damage and loss of utilities with the potential for long recovery times.

PREPAREDNESS ACTIONS

Protect your people. Maintain safe conditions in parking areas and exterior surfaces. If possible, offer ways to telecommute during extreme hazard conditions. Educate personnel on the dangers of extreme winter weather. Limit outdoor tasks.

Protect your assets. Insulate water pipes. Keep trees around property pruned and healthy. Use vehicles and equipment only for business-essential purposes and by competent personnel.

Protect your operations. Stock up on essential supplies and resources. If possible, have mechanisms in place for personnel to work remotely. Communicate with customers, employees, and service providers to minimize longevity of impacts.

RESOURCES

<https://www.weather.gov/mkx/wwa-impacts>

<https://www.npr.org/2019/02/07/692259089/how-to-measure-the-cost-extreme-weather-has-on-the-economy>

Article contribution from:
Emelia Brooks, ALL Consulting
Charles McComas, ALL Consulting

Member Spotlight

Meet Martin Keiner, SAME Tulsa Post Member and future co-chair for the Tulsa Post Communications next year!

Martin Keiner is the Operations Manager at GUY Engineering Services Inc. in Tulsa, Oklahoma. Martin joined the GUY team in the summer of 2019 after retiring from his military career.

Martin was born and raised in Germany and came to the United States in 1981 at the age of 19. He entered Oregon State University, where he earned a degree in Forest Engineering. Martin also joined the Army ROTC program and upon graduation was commissioned as a Second Lieutenant Combat Engineer Officer. In 1992, Martin saw the “light of the way” and transferred to the US Air Force, becoming the Portland Air National Guard Base Deputy Base Civil Engineer. Six years later, he was selected to serve as the Air National Guard Liaison to the Air Combat Command Civil Engineer at Langley Air Force Base, Virginia. He returned to the Air National Guard in 2002, accepting an assignment with the 175th Civil Engineer Squadron in Baltimore, Maryland. Then, in 2004, he returned to active duty as the Air National Guard liaison to the Air Force Civil Engineer, Pentagon, Arlington, Virginia. In March of 2007, then Lt Col Keiner became the 138th Civil Engineer Squadron Commander and Base Civil Engineer, and in 2015 he took command of the 138th Mission Support Group. Martin retired in Dec 2016 after 30 years of service.

During his years of military service, Martin had the opportunity to deploy to Korea, Israel, Norway, Germany, Azerbaijan, and Cuba. In coordination with the Oklahoma Joint Forces Headquarters, he responded to multiple state-level weather emergencies, including the 2013 Moore tornado. He also served on the Crisis Action Teams during the Kosovo crisis and during Hurricane Katrina.

Martin is a Professional Licensed Civil Engineer with a Master’s degree in Engineering and Technology Management from Oklahoma State University. He completed his professional military education curriculum through Air War College.

Martin lives in Owasso, Oklahoma with his wife Betty and has two adult children.



Professional Development

Tulsa Post Foundation Credentialing Program

The Tulsa Post has a Foundation Credentialing Program to promote the professional development of SAME members. The Foundation Board has established a budget for awards to make in 2020. Professional credentialing is a great way to enhance skills to perform better in the industry in which we serve.

The reimbursements are up to \$500 and the program is in place to help support professionals in advancing their careers through credentialing.

The program will support exam prep course, sitting or registration fee reimbursement for credentials, licensures, or certifications which are considered to have an intrinsic value to SAME's mission and the architectural and engineering professions.

- ◆ Initial application deadline is May 1, 2020.
- ◆ If there are more initial applications than funds available, the Foundation will rank the applications based on merit using the information in the applications.
- ◆ If the funds available are not used from the initial applications, additional applications will be accepted throughout the year and awarded in order of submittal and assuming the applications meet the program requirements. **FY20 applications will be accepted until November 30, 2020, or until funds are used.**
- ◆ Applicants must have taken and passed or plan to take and pass a credentialing exam between October 1, 2019 and September 30, 2020 to be eligible for FY20 reimbursement.

A full list of acceptable credentials, licensures and certifications can be found on the application form. The Application for Reimbursement and additional information for exams and other costs can be found on the website (www.sametulsa.org).

Upcoming Tulsa Post Programs

2020 Program Theme

Run to the next 100 years of SAME!

Leading the Way in Industry-Government Collaboration to Support the Nation's Security
Tulsa has led the way in Industry-Government Collaboration on infrastructure and cost engineering issues. In 2020, we will celebrate SAME's Centennial with our many industry and government partners while expanding our efforts at working together to solve issues by engaging new Federal, state and local agencies and other professional organizations.

January Program Meeting:

<i>Topic:</i>	2020 Officer Investiture, State of the Post, Fellows Presentation
<i>Presented by:</i>	SAME Tulsa Post
<i>Sponsor:</i>	SAME Tulsa Post
<i>Date & Time:</i>	January 21, 2020 @ 11:30 am
<i>Place:</i>	Tulsa District USACE Office—1st Floor Auditorium, CityPlex Tower

Meet-the-Corps 2020:

<i>Topic:</i>	Annual Meet the Corps Event
<i>Date & Time:</i>	March 3-4, 2020
<i>Place:</i>	River Spirit Casino Resort
<i>*SAME Tulsa Post website will have the latest information as it become available!</i>	

April Program Meeting:

<i>Topic:</i>	Industry – Government Engagement Workshop: Cost Engineering
<i>Presented by:</i>	USACE SWT
<i>Sponsor:</i>	Benham Design, LLC
<i>Date & Time:</i>	April 19, 2020 @ 11:30 am
<i>Place:</i>	Tulsa District USACE Office—1st Floor Auditorium, CityPlex Tower

For a full calendar of events and programs, please see the SAME Tulsa Post Website:
<http://www.sametulsa.org/>

The mission of the Society of American Military Engineers is to promote and facilitate engineering support for national security by developing and enhancing relationships and competencies among uniformed services, public and private sector engineers, and related professionals.

2020 Engineering & Construction Camps



STEM Engineering and Construction Summer Camps

SAME Engineering and Construction Summer Camps provide a rigorous experience for high school students interested in exploring STEM skills and careers. Campers gain a sense of what it takes to become a STEM professional and what options exist to explore that interest from high school to college and beyond. Each camp has a unique curriculum that features hands-on activities conducted in a competitive environment that promotes teamwork, leadership, project management and problem solving.

To learn more visit: <https://www.same.org/stemcamps>

Click [here](#) to see flyer!

Every year the SAME Tulsa Post supports local high school students interested in pursuing a career in engineering by sending them to SAME Engineering and Construction Camps.

Please contact the SAME Tulsa Post Education & Mentoring Committee for more information!

Interested in becoming a Mentor?

SAME is recruiting Mentors and Staff for the 2020 Camp Season!

The annual STEM Engineering & Construction Camps offer Young Members, Non-commissioned Officers, Teachers, Strategic partner staff, and individuals with STEM background a valuable opportunities to mentor tomorrow's leaders and STEM professionals.

MENTORS. Mentors, Assistant Mentors, and Squad Leaders spend the week at a camp working with outstanding high school students from around the world. These individuals are assigned to groups of students to help guide, train, educate, coach, lead, and mentor the campers through each day's activities. Mentors and their assistants will work with the staff and students from first call in the morning until lights out and be with the campers 24 hours per day for the week of the camp. Additionally, mentors and their assistants are asked to stay in contact with their campers after the camp is over, continue in the mentoring process, and assist in guiding the student in their future academic and professional choices.

STAFF. Some camps need individuals to support the camp in a staff or leadership role.

Positions include:

- ◇ Event Leaders: Lead an event by providing basic instruction, guidance and feedback on the unit's execution of the event.
- ◇ Logistics, transportation, curriculum assistant, first aid

Please visit the following website for more information

<https://www.same.org/SAME-CAMPS/Mentors-Staff>

SAME National News and Information

JETC 2020



For more information, please visit: <https://www.samejetc.org/>

SAME Facilities Management Workshop



For more information, please visit: <https://www.fmworkshop.org/>



Fostering Engineering Leadership for the Nation

The first meeting of the SAME Foundation Board of Directors was held January 26, 2017. Establishing the Foundation is a major step toward achieving the goals and objectives of the 2020 SAME Strategic Plan. We now have an enormous opportunity to support the development of the next generation of military, government civilian, and A/E/C industry leaders. The Foundation also will provide a secure and beneficial repository for charitable and other bequeaths from members of the Society and the public at large. We are so fortunate to have an extraordinary group of individuals who have stepped up to lead the SAME Foundation. The Foundation is chaired by Col. John Mogge, Ph.D., RA, F.SAME, USAF (Ret.).

For more information, please visit: <https://www.same.org/foundation>

For SAME Foundation FAQs click [here](#).

SAME National News and Information

SAME Website Member Spotlight

SAME is looking to post member spotlights on the national website! If you have someone you think deserves some recognition, this is a great way to provide it. Please take about 200 words to explain who the person is and their background professionally and in SAME (essentially, a short biography). Then, have the individual answer the questions in the fields below. These member spotlights are intended to feature the individual and their accomplishments, and provide SAME members a look at how diverse and far-reaching the Society's membership is. *(NOTE: SAME staff makes final decision on what spotlights are selected for publishing; SAME staff reserves the right to edit submissions)*

For more information, please visit: <https://www.same.org/Online-Forms/Member-Spotlight-Form>

Looking to become a Member? Lapsed Membership?

Join / renew: <https://www.same.org/Join>

Why Become a SAME Member?

Click here to view [Benefits](#) and [Value Brief](#)

2020 Meet the Corps Day

Hotel

*Reservations
Open!*

[Click HERE](#)

*Platinum, Gold,
Silver & Bronze
Sponsorship Levels!*

NEW

*Run to 2020
5k race and 1 mile
fun run!*

March 3rd-4th 2020

Meet the Corps Day USACE Tulsa District

**New Location: River Spirit Resort Tulsa!*

*You don't want to miss this
once-a-year networking
opportunity!*

- * Large & Small Business Represented
- * Large Business Networking Tables
 - * Evening Social Event

Stay Informed!

SAME—Tulsa Post Facebook Page!

Stay current as events unfold!



[Click Here!](#)

SAME National News @ <http://sameneews.org/>

RealTiME & RealTiME
E-Newsletter **(((PODCAST)))**

<https://www.same.org/realtime>

**SAME National's weekly digest
blog "Bricks and Clicks"**

Social Media

Twitter: @same_hq

Flickr

Facebook

YouTube

LinkedIn

TME

The Military Engineer

Magazine: <http://sameneews.org/the-military-engineer/>

SAME National Calendar of Events

Nationwide events may be found at the following website link: <https://www.same.org/calendar>

Membership



You can benefit from the SAME Formula for Success!

Feature	Benefit	Value
Premier professional engineering association in the United States	<ul style="list-style-type: none"> Connects you with public sector and private industry professionals in architecture, engineering, construction, environmental, and facility management fields 	<ul style="list-style-type: none"> Become involved and take an active role in strengthening our nation's security and infrastructure
SAME Leadership	<ul style="list-style-type: none"> You can make a difference 	<ul style="list-style-type: none"> Do something that makes a positive impact Career enhancement and development
Wide Network <ul style="list-style-type: none"> 25,000 members 1,400 companies and public agencies 110 Posts 	<ul style="list-style-type: none"> Connects you to these people and organizations 	<ul style="list-style-type: none"> Benefit from opportunities that may not otherwise present themselves Build professional relationships that will last Benefit from mentors and have the opportunity to mentor others
SAME Support	<ul style="list-style-type: none"> Financial support and mentorship of the following charities and programs that help soldiers and their families or mentor leaders in the A/E/C community <ul style="list-style-type: none"> STEM Program and mentoring Scholarships for college students MATHCOUNTS regional competition Sponsorships for high school students to attend Navy, Army, Air Force, or Marine Corps engineering and constructions camps 	<ul style="list-style-type: none"> Contribute to something larger than your firm's business and your professional development Show your appreciation to our service men and women by supporting them and their families Inspire future professionals in the A/E/C field, from K-12 to college students
Membership	<ul style="list-style-type: none"> Connect with top engineering officials Learn about upcoming projects Receive the Military Engineer magazine Stay current of DOD and A/E/C related issues Discounts for SAME events, seminars, and courses offered by SAME Strategic Partners: CMAA IFMA DBIA 	<ul style="list-style-type: none"> Have the pulse of the industry and most up-to-date opportunity information Continued professional development Insight into and understanding of global and national trends
Sustaining Membership	<ul style="list-style-type: none"> Sustaining Member Only Benefits Five openings for individuals as your members representatives (one must be in the Young Member category, age 35 or younger) Access to Members Only section of the SAME website Receive a copy of the annual SAME Directory of Member Companies and Public Agencies 	<ul style="list-style-type: none"> Enhanced networking and relationships Better business opportunities Continuous information sharing More access
Tulsa Post Membership	<ul style="list-style-type: none"> Assured access to Post luncheon meetings Discount on Post events Up-to-date information on Post and Post activities 	<ul style="list-style-type: none"> Learn of upcoming opportunities in the Federal marketplace Get up-to-the-minute briefs in contracting strategies, budgets, and priorities of your potential clients Have access to speakers who are senior level military and local agency leaders Meet with industry leading professionals and your peers to form strategic alliances and teams in pursuit of opportunities

For membership information, please contact:

Gene Snyman

(918) 669-7010

Gene.snyman@usace.army.mil

www.sametulsa.org



- A & M Engineering and Environmental Services Inc.
AECOM
- Aerial Data Service Inc. *
- ALL Consulting LLC *
- Aptim Federal Services, LLC
- ARCADIS, U.S., Inc
- Benham Design, LLC
- BKL, Inc. *
- Black & Veatch Special Projects Corp.
- Bryan Construction, Inc.
- Burns & McDonnell
- CDM Smith
- Comanche Nation Construction, LLC *
- Continental Mapping Consultants, Inc. *
- Cyntergy AEC *
- EA Engineering, Science, and Technology, Inc., PBC *
- ECC*
- Environmental Quality Management Inc.
- Excellence Engineering, LLC *
- Frankfurt-Short-Bruza Assoc., PC
- Freese and Nichols, Inc.
- Garver
- Guernsey
- Guy Engineering Services, Inc. *
- HDR
- HNTB
- HydroGeoLogic, Inc. *
- Jacobs
- Joseph David Associates LLC
- Keithline Engineering Group, PLLC
- Kiewit
- Leidos
- Mason & Hanger
- Mead & Hunt, Inc.
- MECX, Inc. *
- Meshek & Associates, LLC
- Native Hawaiian Veterans, LLC *
- O6 Environmental *
- Olsson
- Oneida ESC Group *
- Parsons
- PIKA International
- SES Group of Companies *
- Southwind Construction Services, LLC
- Stanley Consultants Inc.
- Stantec, Inc.
- Surveying And Mapping, LLC
- Suulutaaq, inc.
- Tehama LLC
- Tepa, LLC *
- Terracon Consultants, Inc.
- Tetra Tech, Inc.
- Weston Solutions, Inc.
- Whitetail Environmental LLC *
- Wilson & Company, Inc., Engineers & Architects

*Indicates Small and /or Tribal Businesses
www.sba.gov

President

Anna Childers, Jacobs
Anna.Childers@jacobs.com

1st Vice President

Wade Anderson, USACE Tulsa District
daniel.w.anderson@usace.army.mil

2nd Vice President

Rebecca Alvarez, Guy Engineering
rebecca@guyengr.com

Secretary

Kyle Marlay, McClure Engineering Company
KMarlay@mecresults.com

Treasurer

Adam Smith, USACE Tulsa District
Adam.R.Smith@usace.army.mil

Program

Miroslav Kurka, Mead & Hunt
miro.kurka@meadhunt.com

Clif Warren, Olsson
cwarren@olsson.com

Programs Committee

Cindy Gran, Garver
CLGran@GarverUSA.com

Sarah Kellert,
Contech Engineered Solutions
SKellert@ContechES.com

Membership

Gene Snyman, USACE Tulsa District
gene.snyman@usace.army.mil

Young Member

Emmett Reedy, Benham Design, LLC
emmett.reedy@benham.com

Young Member Committee

Haley Rush, Cox McLain
Environmental Consulting, Inc.
haley@coxmcclain.com

Readiness

Emelia Brooks, ALL Consulting
ebrooks@all-llc.com

Readiness Committee

Charles McComas, ALL Consulting
cmccomas@all-llc.com

Education & Mentoring

Clif Warren, Olsson
cwarren@olsson.com

Education & Mentoring Committee

Chris Strunk, USACE Tulsa District
Christopher.B.Strunk@usace.army.mil

Scholarship

David Epperly, ALL Consulting
dapperly@all-llc.com

Communication

Amanda John, Benham Design, LLC
amanda.john@benham.com

Communication Committee

David Epperly, ALL Consulting
(Website)
dapperly@all-llc.com
Anna Childers, Jacobs
(Facebook)
Anna.Childers@jacobs.com

Professional Growth

Tim Morgan, HNTB Corporation
cmorgan@hntb.com

Awards & Streamers

Kathy Smith, Cyntergy
ksmith@cyntergy.com

Small Business

Loretta Turner, USACE Tulsa District
Loretta.J.Turner@usace.army.mil

Small Business Committee

John Roberts, A & M Engineering and
Environmental Services, Inc.
JRoberts@aandmeengineering.com

Run to 2020

Ashley Allinder USACE Tulsa District
Ashley.J.Allinder@usace.army.mil

Fellows

Robert Day, Cyntergy
rday@cyntergyaec.com

Earl Groves,
earl.groves@outlook.com

John Blickensderfer, Guy Engineering
John-B@guyengr.com

Miroslav Kurka, Mead & Hunt
miro.kurka@meadhunt.com

Past President

Colonel Chris Hussin,
USACE Tulsa District
Christopher.A.Hussin@usace.army.mil